

LRPAP1 Antibody (C-term)
Affinity Purified Rabbit Polyclonal Antibody (Pab)
Catalog # AP8529b**Specification**

LRPAP1 Antibody (C-term) - Product Information

Application	WB, FC, IHC-P,E
Primary Accession	P30533
Reactivity	Human
Host	Rabbit
Clonality	Polyclonal
Isotype	Rabbit IgG
Calculated MW	41466
Antigen Region	281-309

LRPAP1 Antibody (C-term) - Additional Information**Gene ID** 4043**Other Names**

Alpha-2-macroglobulin receptor-associated protein, Alpha-2-MRAP, Low density lipoprotein receptor-related protein-associated protein 1, RAP, LRPAP1, A2MRAP

Target/Specificity

This LRPAP1 antibody is generated from rabbits immunized with a KLH conjugated synthetic peptide between 281-309 amino acids from the C-terminal region of human LRPAP1.

Dilution

WB~~1:1000

FC~~1:10~50

IHC-P~~1:10~50

E~~Use at an assay dependent concentration.

Format

Purified polyclonal antibody supplied in PBS with 0.09% (W/V) sodium azide. This antibody is purified through a protein A column, followed by peptide affinity purification.

Storage

Maintain refrigerated at 2-8°C for up to 2 weeks. For long term storage store at -20°C in small aliquots to prevent freeze-thaw cycles.

Precautions

LRPAP1 Antibody (C-term) is for research use only and not for use in diagnostic or therapeutic procedures.

LRPAP1 Antibody (C-term) - Protein Information**Name** LRPAP1 ([HGNC:6701](#))

Synonyms A2MRAP

Function Molecular chaperone for LDL receptor-related proteins that may regulate their ligand binding activity along the secretory pathway.

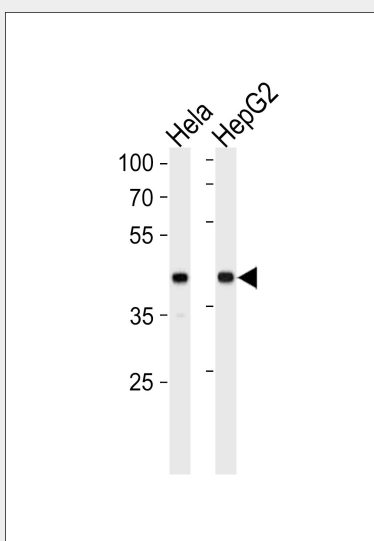
Cellular Location

Rough endoplasmic reticulum lumen. Endoplasmic reticulum-Golgi intermediate compartment lumen. Golgi apparatus, cis- Golgi network. Golgi apparatus lumen. Endosome lumen. Cell surface. Note=May be associated with receptors at the cell surface.

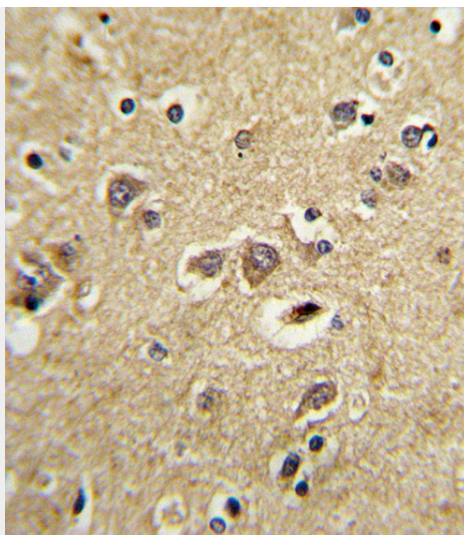
LRPAP1 Antibody (C-term) - Protocols

Provided below are standard protocols that you may find useful for product applications.

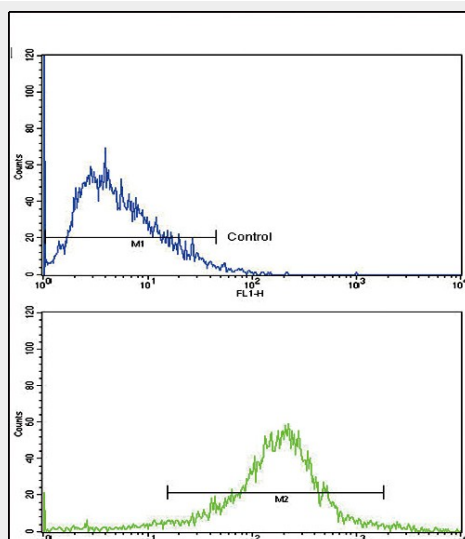
- [Western Blot](#)
- [Blocking Peptides](#)
- [Dot Blot](#)
- [Immunohistochemistry](#)
- [Immunofluorescence](#)
- [Immunoprecipitation](#)
- [Flow Cytometry](#)
- [Cell Culture](#)

LRPAP1 Antibody (C-term) - Images

LRPAP1 Antibody (C-term) (Cat. #AP8529b) western blot analysis in HeLa, HepG2 cell line lysates (35ug/lane). This demonstrates the LRPAP1 antibody detected the LRPAP1 protein (arrow).



Formalin-fixed and paraffin-embedded human brain tissue with LRPAP1 Antibody (C-term), which was peroxidase-conjugated to the secondary antibody, followed by DAB staining. This data demonstrates the use of this antibody for immunohistochemistry; clinical relevance has not been evaluated.



Flow cytometric analysis of HepG2 cells using LRPAP1 Antibody (C-term)(bottom histogram) compared to a negative control cell (top histogram). FITC-conjugated goat-anti-rabbit secondary antibodies were used for the analysis.

LRPAP1 Antibody (C-term) - Background

LRPAP1 interacts with LRP1/alpha-2-macroglobulin receptor and glycoprotein 330.

LRPAP1 Antibody (C-term) - References

Lisi,S., et.al., J. Endocrinol. Invest. 30 (10), 839-843 (2007)
Vertegaal,A.C., et.al., Mol. Cell Proteomics 5 (12), 2298-2310 (2006)

LRPAP1 Antibody (C-term) - Citations

- [Primate-specific miR-603 is implicated in the risk and pathogenesis of Alzheimer's disease.](#)